


SCAPHON

Southern California Association of

Newsletter
 Of the
 Association of
 Pediatric/Hematology Oncology Nurses
 Southern California Chapter



SCAPHON SCOOP

At the epicentre of a storm, it is always calm. Find that centre, your centre. That's where you will find strength. - AVIS Viswanathan

What a challenging year 2020 has turned out to be. From the Covid pandemic, to the Black Lives Matter movement, to the political unrest in our country, it is hard to see the light at the end of the tunnel. This quote speaks to me because I feel as if we have been in an unrelenting storm for much of this year. It is hard to anticipate what the next crisis will be or the face it will wear. We think we are making progress, only to be told that new information changes the previous guidelines we were working under. We struggle to be safe and healthy and we worry about ourselves, our families, sometimes our jobs. We worry about how isolation is affecting the mental health of our families, friends, and coworkers. When it is going to end, when will life be normal? What will normal look like? It is difficult to find the calm, the centre, where you can clear your mind, heart, and soul of all the stress around us. Life is full of uncertainty currently and it is impossible to know what the future holds.

We want to help you nurture your professional centre. Pandemic notwithstanding, SCAPHON is working diligently and continuing to meet monthly to ensure we are meeting the needs of our members. We encourage you to take advantage of the APHON Virtual conference, September 2-4, which will be available online thru 12/31/20. As a board, we are looking at providing an educational webinar in October if we are unable to meet in person for our Quarterly meeting. We are unsure if Spagettini will be open in October, or what the dining options will be. Therefore, we are exploring all options and making contingency plans to ensure we can still provide our members with the quality education we are so proud to provide. We have confirmed that our 2021 annual conference will occur on June 3rd and 4th at the OMNI RANCHO LAS PALMAS RESORT & SPA and have confirmed many of the speakers for next year. We are hoping you will take advantage of the resources available to you-whether through APHON(ACE Learning Center, APHON Self Care and Resiliency resource center), your employment, or whoever and wherever you can find that place to further your professional centre. Look to your colleagues for support and to your patients for inspiration. Remember why you love peds hematology/oncology.

And then there is your personal centre. Find things that help- wiggling your toes in the sand at the beach, a walk in the mountains, a bike ride, a virtual book club meeting. Take time to breathe deeply. And perhaps most of all, LOVE abundantly-for in a world where we seek to love one another and be kind to each other, regardless of our differences, it is there I believe we will find the calm in the storm.

Sincerely,
 Lynn Schubert, BSN, RNC, CPON
 President



Opportunities for Professional Growth



APHON Pediatric Chemotherapy/Biotherapy Provider Course

13.75 Contact Hours
Pediatric Chemo/Biotherapy Provider Card



Children's Hospital Los Angeles TBD

For information, contact Maria Velasco at (323) 361-1677 or at
mvelasco@chla.usc.edu



Children's Hospital of Orange County TBD

For information, please email:
Casey Koerner at ckoerner@choc.org



The 14th Annual Sickle Cell Disease Research & Educational Symposium and 43rd National Sickle Cell Disease Scientific Meeting – Virtual

September 23-25, 2020

SCAPHON Website On-Line!

Our website address is:
www.scaphon.org

The SCAPHON website features

Information about:

- ❖ Quarterly Meetings
- ❖ Conferences
- ❖ Scholarships
- ❖ Board Members
- ❖ Downloadable copy of our newsletter
- ❖ Quarterly Dinner Meeting Flyer
- ❖ And now the conference brochure!

Please visit our website often!

Contact:

Anne Nord @ website@SCAPHON.org



Association of Pediatric
Hematology/Oncology Nurses (APHON) 44th
Annual Conference & Exhibit:
A Virtual Experience

**CME webcast live dates will take place
September 2-4, 2020**

**Educational content will be accessible on-
demand through
December 31, 2020**

<http://conference.aphon.org/>

The SCAPHON SCOOP

*Published by
The Association of
Pediatric Hematology/Oncology Nurses
Southern California Chapter*

President: Lynn Schubert
Editor: Kathryn Duvall

Contributors:
Sharon Bergeron Allison Bell
Danielle Mucker Ashley Villalobos
Christine Yun



Education Corner

Sharon Bergeron, RN, BSN, CPON, Research Educator,
Hyundai Cancer Institute, CHOC Children's Hospital

Utilizing a Novel Human Monoclonal Antibody, Ganitumab, in Children, Adolescents and Young Adults with Relapsed and Metastatic Ewing's Sarcoma

Ganitumab is a fully human monoclonal antibody designed to attach to and block the insulin-like growth factor 1 receptor (IGF-1R). IGF-1R is important in the development and progression of many cancers, possibly due to its properties of preventing cancer cells death, which allows those cells to resist chemotherapeutic drugs or radiation therapy. By preventing the attachment of IGF-1R to its receptors and the subsequent activation of the PI3K/Akt signaling pathway, ganitumab inhibits tumor cell proliferation and induces the death of tumor cells.

Despite improvements in outcomes for patients with localized Ewing's sarcoma, patients with relapsed metastatic Ewing's sarcoma continue to have poor outcomes with current chemotherapy options. A large body of preclinical data supports a role for IGF-1R inhibition in the treatment of Ewing's Sarcoma. More recently, clinical trials of IGF-1R monoclonal antibodies have demonstrated single-agent activity in patients with relapsed Ewing's Sarcoma. In phase 2 clinical trials, Ganitumab is demonstrating encouraging antitumor activity in treating patients with metastatic Ewing's Sarcoma. The dose limiting toxicity was thrombocytopenia.

How is the Drug Administered to the Patient?

Ganitumab is given IV over 1 hour (60 minutes) for the first dose or can be prolonged up to 120 minutes as necessary. If agent is tolerated by the patient, the infusion can be given over 30 minutes for subsequent infusions. The recommended dose is 18 mg/kg/dose and the agent is given every 2 weeks. This agent is usually given until there is clinical disease progression or unacceptable toxicity. Given the risk of hyperglycemia that can occur with Ganitumab, corticosteroids as an antiemetic is strongly discouraged and only use if medically necessary for infusion reactions. Pre-meds are not necessary on first infusion and will only be indicated with infusion reactions. Flush line with normal saline following the completion of the infusion.

Common Side Effects of Drug:

- Thrombocytopenia
- Fatigue
- **Infusion Reactions:** fever, chills, hypotension, tachycardia, weakness or lack of energy and strength, headache, rash.
- Fatigue
- Hyperglycemia
- Loss of Appetite

In cases of severe infusion reactions, notify the physician; the infusion should be stopped, and appropriate medical treatment should be administered such as steroids, epinephrine, bronchodilators and oxygen.

Special Considerations and Monitoring Required:

- Obtain baseline **vital signs** immediately **prior** to initiation of infusion, **15 minutes** after the start of the infusion, **30 minutes** after the start of the infusion and at the **end** of infusion as well as **1 hour** after the completion of the infusion. **Monitor for infusion reactions** and be prepared to administer emergency medications/oxygen as ordered if patient experiences a severe infusion-related reaction.
- Monitor glucose levels for the occurrence of hyperglycemia and notify physician.
- Monitor **CBC** and platelet counts as well as chemistry Panels for low blood counts and electrolyte abnormalities.

From the SCAPHON 2021 Conference Planning Chair...
Alison Bell

Save the Date!

SCAPHON Annual Conference
June 3 & 4, 2021
Omni Rancho Las Palmas Resort & Spa
Rancho Mirage, CA



**Southern California Association of
Pediatric Hematology/Oncology Nurses**

This is a friendly SCAPHON reminder that your annual membership is due for renewal. The SCAPHON board is working to ensure that we are able to safely host quarterly dinners in person or via zoom.

Don't forget that your membership includes:

- 3 Quarterly Educational Dinners (1.0 CEU each)
- Discounted Conference Registration
- The SCAPHON SCOOP
- The ability to vote for our board.

Please see the link below to complete your registration

<http://www.scaphon.org/membership/>

Please contact Danielle Mucker at dmucker@choc.org if you have any questions

SCAPHON ELECTION RESULTS



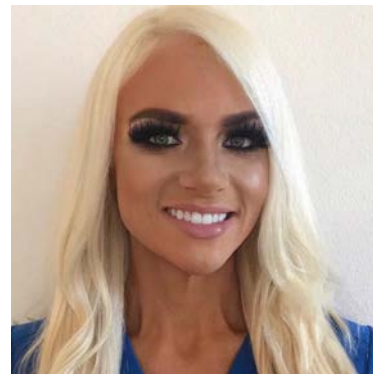
President Elect:
Kasey Rangan, MSN, RN, CPNP, CPON



Treasurer:
Angie Blackwell, MSN, RN, CNS, CPON



Community Service Chair:
Danielle Mucker, MSN, RN, CPHON



Quarterly Planning Chair:
Ashley Villalobos, BSN, RN

Thank you to everyone who took time to vote in the 2020 SCAPHON elections.

SCAPHON would not be the chapter it is without members who participate in their professional organization.

Community Service Project 2020
Danielle Mucker, Chair



Unfortunately, we were unable to host our Annual SCAPHON Conference this year. Fortunately, we hosted a virtual drive and we were able to collect some items for our local Ronald McDonald Houses. Thank you to all of those who donated! If you missed out and would like to donate, each of the RMH has an amazon wish list on their individual websites.

With so many events and community volunteer opportunities that have been canceled or transitioned to a virtual platform, we are seeking creative ways to continue to support the many organizations that continue to support our patients. In September/October we will be partnering with the MaxLove Project as they host their first ever virtual Farm to Fork event. The MaxLove Project was founded by Audra and Justin Wilford in 2011 after their son, Max, was diagnosed with brain cancer. After deciding to become partners in Max's treatment, recovery, and survivorship they consulted with doctors, researchers, and other cancer families to discover what they could do in addition to the standard treatment to improve Max's life. Audra, Max's Mom and founder of the MaxLove Project, has spoken at our previous SCAPHON Annual Conference in 2015, and we are so excited to support their annual fundraiser in safe, unique and creative ways. Stay tuned for more information, and make sure you are following @socialaphon on Instagram for all your SCAPHON updates.

Let's get creative and seek out ways to safely support out local communities! If you know of any oppourtunities for volunteering, please contact:

Danielle Mucker at dmucker@choc.org.



*Helping SuperKids
Thrive Against the Oc*



SCAPHON

**Southern California Association of
Pediatric Hematology/Oncology Nurses**

*Association of Pediatric Hematology/Oncology Nurses
Southern California Chapter*

Quarterly Dinner Meeting and Educational Forum

***Save the Date!!!
October 13, 2020***

TOPIC and Format To Be Determined

For more information visit SCAPHON.ORG or contact

Ashley Villalobos@ Ashley.villalobos@choc.org

Online Registration

<http://www.scaphon.org/quarterly-lecture/>